

**Borough of Montrose
Susquehanna County, Pennsylvania**

Amendment to the Zoning Map of the Borough of Montrose

Ordinance No. 2019-01

AN ORDINANCE OF THE BOROUGH OF MONTROSE OF SUSQUEHANNA COUNTY, PENNSYLVANIA, TO AMEND CHAPTER 112 (ZONING), ARTICLE III, §112-11 OF THE CODE OF THE BOROUGH OF MONTROSE AND ARTICLE III, §112-303 OF THE ZONING ORDINANCE OF MONTROSE BOROUGH (ZONING MAP) TO CHANGE THE ZONING DESIGNATION OF THE FOLLOWING SUSQUEHANNA COUNTY TAX PARCEL NUMBERS: 124.14-3, 045.00,000 AND 124.14-3, 073.00,000 FROM RESIDENTIAL (R-1) TO INDUSTRIAL (I-1)

BE IT HEREBY ORDAINED AND ENACTED by the Borough Council of the Borough of Montrose, Susquehanna County, Pennsylvania, by the authority of and pursuant to the provisions of Act of July 31, 1968, P.L. 805, No. 247 of the General Assembly of the Commonwealth of Pennsylvania, as reenacted and amended, known and cited as the Pennsylvania Municipalities Planning Code, that the Code of Ordinances of the Borough of Montrose and the Zoning Ordinance of Montrose Borough of December 17, 2012, both of which adopt the of Montrose Zoning Map, are hereby amended as follows:

Section 1. Amendment to Chapter 112 (Zoning), Article III, §112-11 of the Borough of Montrose Code and §112-303 of the Zoning Ordinance of Montrose Borough

Chapter 112 (Zoning), Article III, §112-11 of the Borough of Montrose Code and §112-303 of the Zoning Ordinance of Montrose Borough which adopts the zoning map appended to the Zoning Ordinance and establishes the location and boundaries of the zoning districts are hereby each amended to provide that the zoning district designation of Susquehanna County Tax Parcel Nos. 124.14-3,045.00,000 and 124.13-3,073.00,000 are changed from R-1 (Residential) to I-1 (Industrial).

Section 2. Severability

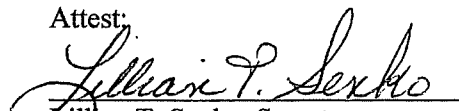
Should any section, subsection, clause, provision or other portion of this Ordinance be declared invalid by any court, such decision shall not affect the validity of the remainder of this Ordinance; the Borough Council having adopted this Ordinance as if such invalid portions had not been included therein.

Section 3. Effective Date

This Ordinance shall become effective immediately upon adoption.

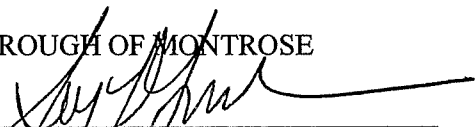
ENACTED AND ORDAINED this **5th** day of **August**, 2019

Attest:

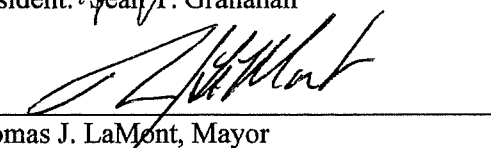

Lilian T. Senko, Secretary

BOROUGH OF MONTROSE

By:


President: Sean T. Granahan





By:


Thomas J. LaMont, Mayor

ZONING MAP

Legend

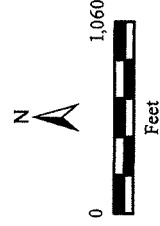
Zoning Districts

-  R-1 Residential
-  C-1 Commercial
-  X-1 Office
-  I-1 Industrial

Approved by: [Signature]

Adopted: December 12, 2012
 Revised: August 1, 2016
 Revised: August 5, 2019

Borough of Montrose
 Susquehanna County, Pennsylvania



Prepared by:
 Nanci Sarcinello, AICP
 Sarcinello Planning & GIS Services

